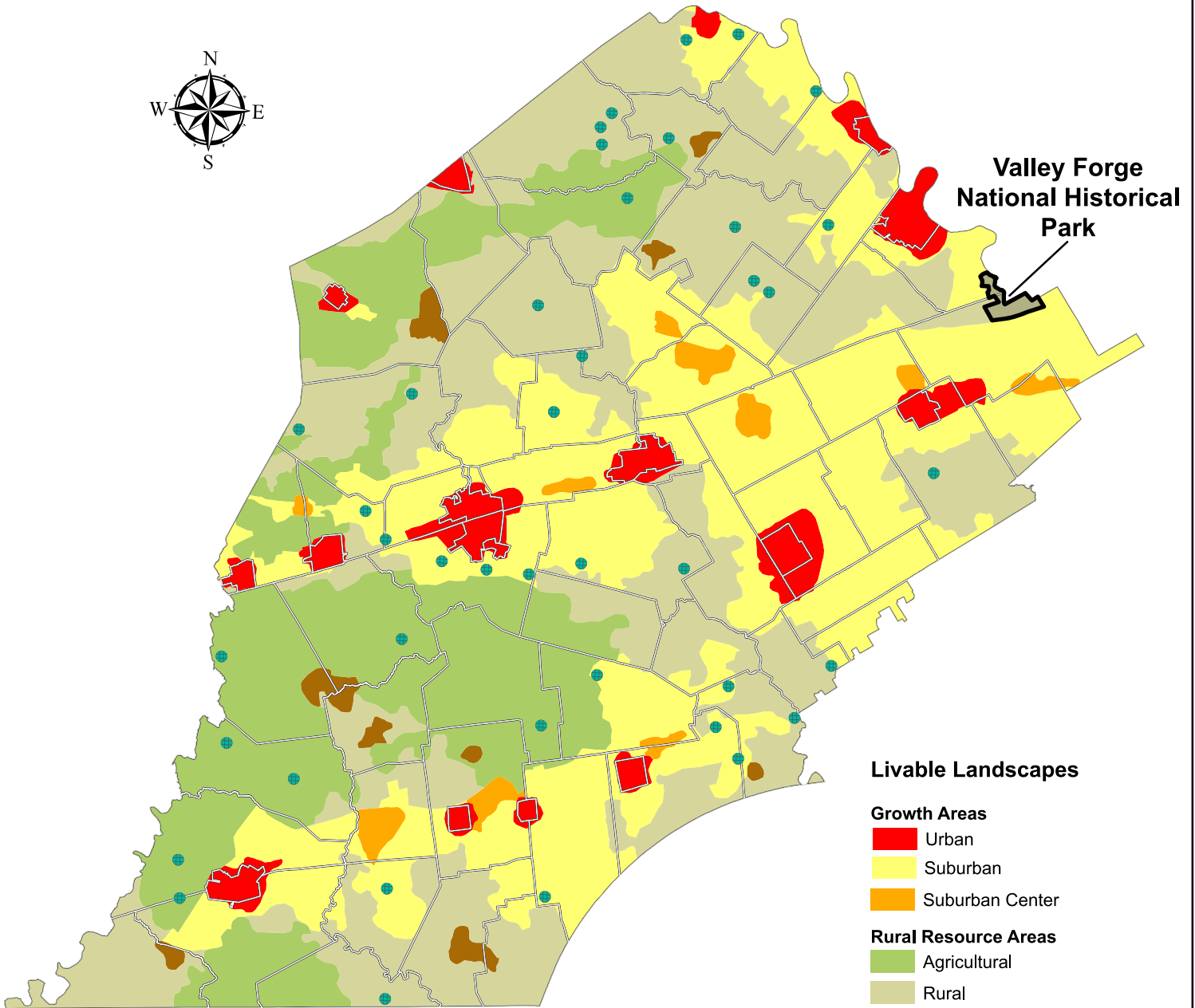


# Livable Landscapes



## Livable Landscapes

### Growth Areas

- Urban
- Suburban
- Suburban Center

### Rural Resource Areas

- Agricultural
- Rural
- Rural Center

### Overlay Features

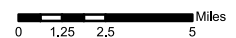
- Villages
- Municipalities

**Landscapes2**

Our Growth & Preservation Plan  
CHESTER COUNTY | PENNSYLVANIA

<http://www.landscapes2.org>

For more information, please contact:  
Chester County Planning Commission  
<http://www.chesco.org/planning>  
[landscapes2@chesco.org](mailto:landscapes2@chesco.org)



Adopted November 2009